



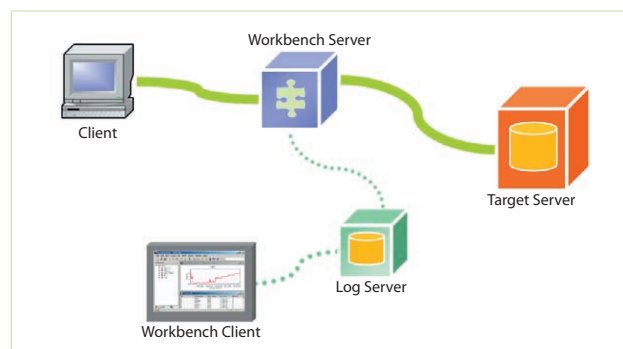
- Automated capture of transactions
- Seven customisable threshold or indicators, with four levels of severity
- Instant locating of faulty SQL transactions and immediate identification of the cause of the problem
- Precise locating of SQL instructions causing problems even in nested stored procedures and triggers
- Recording of user sessions as SQL scripts, fully re-usable for other tests
- Validation of software solutions, even if the source code is unavailable
- Identification of the database objects accessed during test sessions in order to generate measurements covering the tests
- Real-time or delayed display of technical information
- Graphs for data analysis

*Quotium Workbench™ is a powerful software solution designed to analyse SQL transactions, allowing developers, DBAs or QA Managers to diagnose the reasons behind any loss of performance in SQL transactions within their applications.*

Quotium Workbench™ analyses, in real-time and in a transparent way, the strategies and data access statistics for all queries and transactions executed between the client applications and the SQL servers.

Quotium Workbench™ accurately displays what was sent by the Client - among other things: the actual parameters and dynamically generated values - and then triggers an alarm for any transaction going beyond the performance thresholds you defined.

Poorly performing transactions can be optimized very easily since Quotium Workbench™ displays, within the same interface, the SQL commands and very detailed performance statistics. Hardware investment will, as a result, be optimised as well as your applications providing optimal response times.



Quotium Workbench™ Architecture

## Quotium Workbench™ Architecture

Quotium Workbench™ is based on Client/Server architecture; the statistical data captured by the Workbench Server™ is stored in a centralised database. Workbench Client™ gives the user the option to analyse and directly optimise the transactions in order to measure gains in performance.

By using the Gateway Capture™ technology, Quotium Workbench™ continuously captures the client transactions and does not require any modification within the application itself. The system offers the advantage of being able to have several users working simultaneously on the same application.

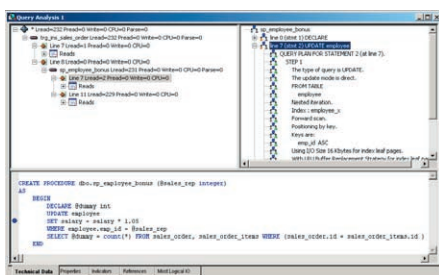
*“ Quotium Workbench™ is the reference tool for SQL developers and DBA who wish to optimise the quality of their applications.”*

# Quotium Workbench™ is part of the QuotiumEnterprise™ range of professional tools.

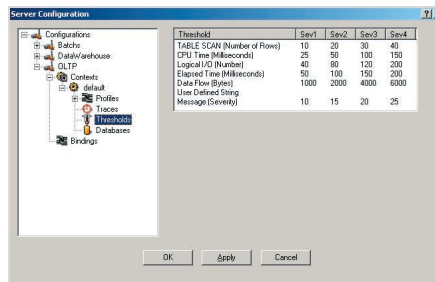
## Anomaly detection

Quotium Workbench™ captures the client transactions and automatically compiles the related performance information.

7 types of anomaly can be identified and classified according to 4 alert thresholds.



Anomaly detail



Thresholds definition

## SQL instructions localisation

Thanks to a powerful analysis engine, Quotium Workbench™ immediately identifies any application slowdown related to SQL instructions.

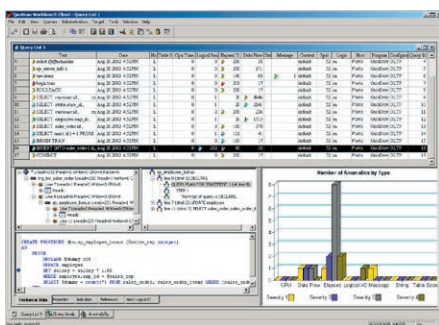
The Client interface gives the user useful information regarding the optimization strategy to implement.

## SQL object search

Quotium Workbench can also help to diagnose an application or a software component for which the source code is not available.

The SQL object function gives access to a wide range of information (source code of a particular query, impacted objects, name of the program, etc...).

SQL objects



Analysis and reporting

## Analysis and Optimization

Quotium Workbench™ offers a fully graphical reporting interface. Information can be sorted, filtered and displayed under different formats.

It also gives the option of optimizing transactions directly and measure performance gains without modifying the existing application.

Subsidiary of Groupe Technologies, Quotium Technologies is a software vendor specialised in the development of test, validation, and information systems monitoring software solutions. With market-acknowledged solutions, Quotium Technologies positions itself as the only European software company able to market professional test solutions to development, pre-production, and production teams.

## System requirements

### Client

- Pentium III or 4 PC
- 128 MB of RAM
- 20 MB of available hard-disk space
- CD-ROM Driver
- Monitor SVGA
- Windows NT4/2000

### Server

- Pentium III or 4 PC
- 128 MB of RAM (192 MB recommended)
- 20 MB of available hard-disk space
- CD-ROM Driver
- Monitor SVGA
- Windows NT4/2000

### Database

- Microsoft SQL Server 6.5, 7.x, 2000
- Sybase 11.x, 12.x



## UK Distributor

Eureka Software Ltd  
Overleigh House  
Southstoke Road  
Bath

Tel: +44 (0) 1225-840022  
E-Mail: info@eureka-software.co.uk  
www.eureka-software.co.uk

## Quotium Technologies

84-88, boulevard de la  
Mission Marchand  
92411 Courbevoie Cedex  
FRANCE

Tel: +33 (0)1 49 04 70 70  
Fax: +33 (0)1 43 33 92 00  
E-mail: info@quotium.com

## Quotium Inc.

100 Cummings Center  
Suite 336B  
Beverly, MA 01915 USA

Tel: +1 (978) 867 2800  
Fax: +1 (978) 867 2005  
E-mail: usinfo@quotium.com